

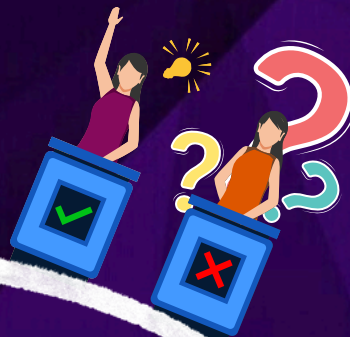


CulComm
Presents



Univ Week

2025



Event Timeline

27TH
APRIL

Sunday

MICDROP

28TH
APRIL

Monday



RAMPAGE

29TH
APRIL

Tuesday

POP
CULTURE

30TH
APRIL

Wednesday

BEYOND THE
BELL, ART MELA,
MASTERCHEF

1ST
MAY

Thursday

QUIZWHIZ,
FAREWELL

UNIV
WEEK
2025

2ND
MAY

Friday

THE NLS BALL



3RD
MAY

Saturday

TAAL



GENERAL RULES

- This year, we have 11 batches participating for the UnivShield.
- For equitable scoring, we have categorized the competitions into three-star, four-star, and five-star competitions.
- Each competition would entail specific points to the 1st, 2nd, and 3rd batch of the day. The division of the points would depend on the kind of event.
- The representative score of the batch for a competition will be equivalent to the best score posed by a team of the batch.
- At the end of 7th Day, we would calculate the total points of each batch, and award the UnivShield to the highest scoring batch.
- The type of each event (three/four/five-starred) is provided on the cover-page of the event.

UNIVWEEK'25

SCORING TABLE

| Event Type | 1 st Position | 2 nd Posititon | 3 rd Position |
|------------|-----------------------------|------------------------------|-----------------------------|
| ★ ★ ★ | 8 Points | 4 Points | 2 Points |
| ★ ★ ★ ★ | 12 Points | 8 Points | 4 Points |
| ★ ★ ★ ★ ★ | 15 Points | 10 Points | 5 Points |



Mic Drop



Event Head: Anmol (III BA.LLB) & Aishiki (I BA.LLB)
Contact: 9798914147(Anmol) & 8101350900 (Aishiki)



Mic Drop

This year, our event will explore six dynamic decades - the 60s, 70s, 80s, 90s, 2000s, and beyond, inviting each batch to explore and reinterpret the musical and cultural signatures of these eras.

Theme Selection:

- The Selection of themes will operate on a First-come, first-serve (FCFS) basis.
- Each batch will be given two (2) opportunities to choose their preferred era.

We have two categories for the Music Competition:

i) Vocal Solo/Duet

The scoring criteria for this category shall be:

1. Skill/technique (20),
2. Range/tone of voice (20),
3. Rhythm (20),
4. Presentation/modulation (10),
5. Stage presence (10),
6. Choice of piece (10),
7. Overall impression (10).

There must be a minimum of one solo/duet

ii) Vocal Group

The scoring criteria for this category shall be:

1. Skill/technique (15),
2. Range/tone of voice (15),
3. Rhythm (15),
4. Co - ordination/harmony (15),
5. Presentation/modulation (10),
6. Stage presence (10),
7. Choice of piece (10),
8. Overall impression (10).

There must be a minimum of one group performance (>3 members).





Mic Drop

General Rules

- Participation in both the categories is mandatory.
- If the participants wish to use a background music/backtrack, such music must be submitted to the undersigned event heads in the format prescribed by culcomm@nls.ac.in by 12:00 PM on 26th April 2025 (Saturday) in a ready-to-play format.
- No external instruments shall be provided by the committee. You are free to use the internal instruments of the University, however, a complaint will not be entertained in case of any grievance.
- The Maximum time allotted per batch is 20 minutes for singing. This includes all the performances in both the categories mentioned above.
- Time limits shall be strictly enforced. A penalty worth 10% of the total score will be deducted for every minute exceeded from the total score, if the batch exceeds 20 minutes. The penalty will continue for up to 5 minutes following the initial 20-minute period, after which the music will be stopped.
- Participants must announce the name(s) of the performer(s) and the name of the song/piece before each performance.
- For both categories, only the number of singers will be considered. Any instrumentalists/accompanists will not be included. (For Instance, if there are 2 vocalists and 1 instrumentalist, it will constitute a vocal duet performance and not a group).
- Accompanists may be brought by any batch for purposes of playing instruments, if the need be. They can be from any batch.
- More than one person can accompany for the vocal categories, but they will be considered as a vocalist if they sing at any point.





Pop Culture



Event Head: Archana (III BA.LLB)

Contact: 8400479019

Pop Culture

Every batch can send only one team, which can comprise a maximum of six members (minimum of four). Batches may individually decide how to choose this team.

In total, there will be nine rounds: 4 for the Cinema Quiz, 2 for the Hook Step Challenge and 2 for Guess the song by the hookstep, and 1 for Complete the Lyrics.

Cinema Quiz

A quiz will be hosted on various aspects of pop culture, such as Movies, TV Shows, Music, Fashion and Viral Trends, etc.

Hook Step Challenge

A few seconds of some popular dance songs will be played and the participants will have to guess the song and perform its hook step.

Pop Culture

Guess the Song by the HookStep Challenge

Each batch must nominate one representative for this round. The representative will wear headphones through which a song will be played. If they correctly identify and perform the hook step, the team will earn 5 points. Based on the representative's performance, the rest of the team must then guess the song. A correct guess will earn an additional 5 points. In total, 10 points will be awarded for the correct guesses in both the subcomponents.

Complete the Lyrics Challenge

After the song is stopped, the participants will have to guess and complete the lyrics of the song. The lyrics has to correct and in proper order for it to be considered.

RAMPAGE

UNIV
WEEK

APRIL
2025



"NOW WE HAVE
PERMISSION TO
SPEAK?"

"WELL I HAVE
ALWAYS
SPOKEN."

TRENDS
TRANSLATED: A
LOOK FOR EVERY
CULTURE

CAN YOU EVER
OVERDRESS IN
DESI?

REGENER:
BREAKING
STEREOTYPES

EVENT HEAD: DIVYANSHU (I BA.LLB)
CONTACT: 6377037829

**ECO-CHIC:
SUSTAINABLE
FASHION**



UNITY IN DIVERSITY

THEME 1



By Divyanshu Choudhary
(1st yr BALLB)

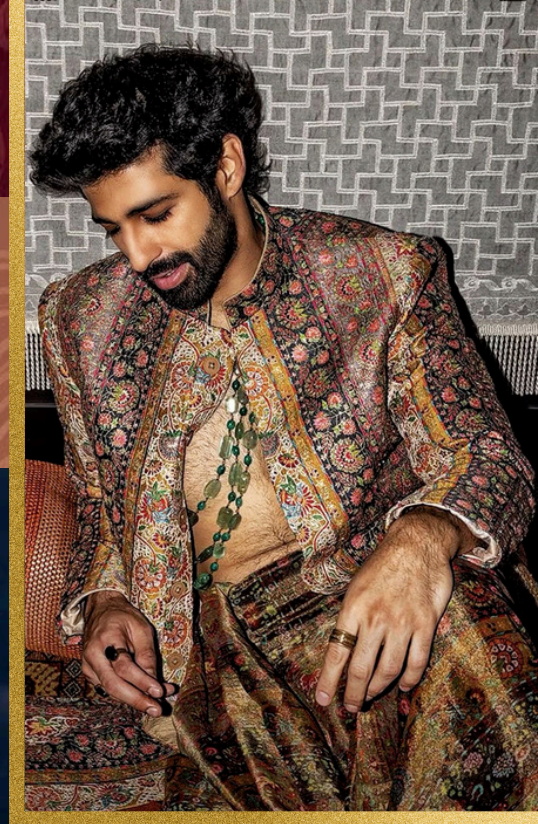
REGENER

THEME 2



DESI MAXIMALISM

THEME 3



By Divyanshu Choudhary
(1st yr BALLB)

SUSTAINABLE CLOTHING

THEME 4



By Divyanshu Choudhary
(1st yr BALLB)

RAMPAGE

UNIV
WEEK

APRIL
2025

JUDGING CRITERIA

The Judging Criteria for each presentation (unless specified otherwise in a category) totals 100 points:

- 1. Creativity (15)**
- 2. Sequence and Walk (15)**
- 3. Attire and Accessories (15)**
- 4. Hairdo (10)**
- 5. Coordination (10)**
- 6. Use of Ramp (10)**
- 7. Relevance to Theme (10)**
- 8. Overall Impression (15)**



RAMPAGE

UNIV
WEEK

APRIL
2025

GENERAL RULES

- **Participation and Team Composition**
 - The competition is inter-batch, with 11 batches competing.
 - Each batch must field one team consisting of a minimum of 5 and a maximum of 8 members.
 - A recommended team structure is:
 - 2 Models
 - 2 Designers
 - 1 Makeup Artist
 - (Additional participants as needed, provided the total does not exceed 8.)
- **Concept Note Submission**
 - Every participating team must submit a concept note for their performance, clearly explaining how they plan to interpret and present their chosen theme(s).
 - The concept note must be submitted by the deadline announced by CulComm.
 - Late submission or failure to submit a concept note may lead to disqualification or penalty.

RAMPAGE

UNIV
WEEK

APRIL
2025

- **Theme Adherence**

- Teams must strictly adhere to the theme(s) they choose. Any deviation should be explained in the concept note; otherwise, it may result in point deductions.
- The decided themes for the event are as follows:
 1. Unity in Diversity
 2. Regender: Breaking Stereotypes
 3. Desi Maximalism
 4. Sustainable Clothing

- **Miscellaneous Details:**

- Music, if required, must be submitted in the format prescribed by CulComm by the stated deadline.
- Teams are responsible for bringing their own props, costumes, and makeup.
- The organizers will not provide or be liable for missing items. Teams should arrive stage-ready; no extra time will be given for dressing or makeup beyond the allotted slot.

RAMPAGE

UNIV
WEEK

APRIL
2025

- **Ensure Respectful Behavior:**

- Participants must ensure their performances remain respectful and free from obscene or profane elements. Any content deemed overly offensive, insulting, or disrespectful toward any individual or group by the judges or organizers may result in penalties or disqualification.
- All participants are expected to follow the SHIC guidelines set by CulComm in consultation with SHPA.
- Any discriminatory or offensive portrayal will lead to immediate action, including possible disqualification.
- Respect for fellow competitors, audience, and organizers is mandatory.
- Remember the core aims—be inclusive, creative, and bold. Embrace new ideas, uplift each other, and showcase the diversity and talent of your batch.



BEYOND THE BELL

★ Venue:
★ Amphitheater
★ Time:
★ 5:15 PM - 6:45 PM

One-of-a kind
Faculty- Admin-
Student Mixer : A
chance to take a
break from classes
and assignment,
and hangout with
your profs outside
the classroom-
laughing, snacking
and vibing in a chill,
no pressure space.



ART MELA



Event Head: Madhura (III BA.LLB)

Contact: 7471119292



**A
R
T**

**M
E
L
A**

This year's Art Mela will feature an inter-batch art competition with the following categories:

- (a) Graffiti (Main Event)**
- (b) Face Painting/Hand Painting**
- (c) Junk-to-Art**
- (d) Speed Origami Showdown**

Your paragraph text

General Rules

- Every batch must submit at least one entry in at least two out of the three categories (Face Painting/Hand Painting, Junk-to-Art, Speed Origami Showdown), failing which they will be disqualified from competing for the Shield. Participation in the Graffiti competition is mandatory for eligibility for the Shield.
- In case entries are received in more than 2 categories (excluding graffiti), the average of the top two highest scoring categories will be considered for the purpose of final evaluation. (eg. If a batch has participated in all 3 categories, the order of their scores will be considered. The average of the top 2 scoring categories will be the final score of Art Mela of that batch in those competitions.)
- The Graffiti competition score will be added to the average of the top 2 scoring categories to calculate the final score for the Art Mela.
- FCFS (First Come First Serve) Registration for Graffiti will be done beforehand to determine the amount of plywood required.

ART

MELA

The background of the entire page is a reproduction of J.M.W. Turner's painting 'Rain, Steam, and Great Smokes', which depicts a starry night sky with swirling blue and white clouds and a bright yellow sun or moon in the upper right corner. A large, semi-transparent yellow rectangle is centered on the page, containing the main text. On the left side, the word 'ART' is written vertically in large, blue, stylized letters. On the right side, the word 'MELLA' is written vertically in large, blue, stylized letters. At the bottom of the page, there is a decorative border featuring a field of yellow sunflowers and several butterflies in various colors (orange, black, blue, and white).

Graffiti Making Competition

- This is a batch-wide competition. There is no limit to any number of participation, and all members of the batch are encouraged to participate.
- Each batch will be provided with a plywood board of approximately 6x3 ft and 8 mm (size subject to change based on registration).
- The finished graffiti artwork will be used as a backdrop for the rest of UnivWeek at the amphitheater.
- The Committee will provide basic Art supplies in a limited range of colours. Batches are welcome to bring their own Art supplies, spray paints and stencils, if desired.
- The competition will start at 2 PM sharp, and will be evaluated at 4:45 PM sharp. The participants are required to plan their artwork in the said time-limit.

Judging Criteria

- Creativity and Originality (30)
- Use of Colour and Composition (30)
- Relevance to Theme (20)
- Overall Impact and Visual Appeal (20)

Face/Hand Painting Competition

- Participation may be done individually (the person painting their own one hand/ face) or in a team of two (where one person would paint someone else's one hand).
- A maximum of 2 entries per batch will be allowed.
- Paints, brushes, and palette will be provided by the Committee.

Judging Criteria

- Creativity and innovation (25)
- Use of Colour (25)
- Skill (25)
- and Overall impression (25)

ART

MELLA



Junk-To-Art

- Participation may be done individually or in a team of up to 3.
- Participants must create a piece of art using primarily recycled or 'junk' materials. The emphasis is on creative reuse.
- Participants must bring their own junk materials. The Committee will provide basic art supplies and adhesives (glue, tape).
- The maximum number of entries is 2.

Judging Criteria

- Creativity and innovation (30)
- Effective use of recycled materials (30)
- Artistic Skill and Construction (20)
- Overall Impression (20)



Speed Origami Showdown

- The maximum number of entries is 2.
- Participation is individual.
- Participants will be given a specific origami design to create within a limited time frame (e.g., 10 minutes).
- The Committee will provide origami paper.

Judging Criteria

- Accuracy of the Folded Design (40)
- Speed of Completion (30)
- Neatness and Precision (30)

A
R
T

M
E
L
L
A



Master Chef



Event Head: Akanksha (I BA.LLB)

Contact: 7763820447

A decorative border surrounds the central text area, featuring various food items including tacos, tomatoes, chili peppers, lemons, and a bottle of oil.

Masterchef

Each batch is represented by one team of 1-8 students.

The marking criteria is as follows:

- 1) Taste (50),
- 2) Presentation (20),
- 3) Creativity (20),
- 4) Cooking technique (10).



Masterchef

- The Participants are free to cook any dish of their choice. However, basing the dish entirely on pre-made material is not allowed.
- A batch can cook various dishes (within the maximum limit of participants), but each dish will be marked independently, and only the best marked dish will be the final score of the batch.
- Participants are allowed to cook in their hostels but have to assemble the dish in the Amphitheatre/CAB Quad. There must be an unedited/uncut video which shows participants cooking the dish. The same shall be shared to the event head or sent via mail to culcomm@nls.ac.in.

A decorative border surrounds the central text box, featuring various food items including tacos, tomatoes, lemons, and herbs.

Masterchef

- The Participants are free to cook any dish of their choice. However, basing the dish entirely on pre-made material is not allowed.
- No hostel heating appliances will be allowed in the Amphitheatre/CAB Quad. however, participants can bring their own personal induction and kettle.
- Note, Gas and Stove-based appliances are strictly not allowed.
- Participants have to prepare at least one dish which will be tasted by the judge. Further, they will be free to sell the food in the amphitheatre at the prices of their choice.



FAREWELL

2025

May 1
BY SBA

QUIZ

WIKIZ

BY NLSQC



THE NLS BALL

The background of the entire image is a deep purple night sky. A large, bright, pale yellow full moon is centered in the lower half of the frame. In the foreground, the dark silhouettes of a man and a woman are shown in a romantic embrace, facing each other. The man is on the left, wearing a tuxedo, and the woman is on the right, wearing a long, flowing gown. Behind them, the silhouettes of rolling hills and evergreen trees are visible. In the upper right quadrant, a shooting star or comet streaks across the sky, leaving a long, faint trail.

RULES? WHAT RULES? DANCE THE
NIGHT AWAY!

TAAI



Dance Competition

Event Head: Samridhi (II BA.LLB) & Mridul (II BA.LLB)
Contact: 9631107555 (Samriddhi) & 9479967457 (Mridul)

T A A L

General Rules

- The maximum time allotted per batch is 20 minutes (empty stage to empty stage). This includes all the performances (competitive and non-competitive) under all the categories mentioned above.
- Time limits shall be strictly enforced. If a team is unable to complete all their performances in the 20 min period, their remaining performances shall stand cancelled. They shall be marked only on those performances which they complete (in any category).
- Participation in both categories (Solo/Duet & Group) is mandatory.
- Music and prop details must be submitted in a format prescribed by culcomm@nls.ac.in no later than 1 PM on Thursday, 2nd May 2025. Failure to adhere to this deadline may lead to the disqualification of the batch from the dance competition.
- Participants have to come equipped and ready with their own props.
- Organizers shall not be responsible for any of the above nor will provide the same.

Dance Competition

TAAAL

We have two categories under Dance this year:

Category A: Solo/Duet Category

From each batch, there has to be a minimum of one entry for either solo or duet.

The scoring criterion for this category shall be:

- Choreography (30)
- Expression (20)
- Rhythm (20)
- Costume (15) and
- Use of stage (15).



Dance Competition

T A A L

Category B: Group Category

There must be a minimum of eight (8) participants per entry. That means any performance with less than 8 members would not be categorized as group performance under this category.

There has to be a mandatory group performance from each batch with a minimum number of participants to be 20.

The minimum time limit for the mandatory group performance would be 1 minute.

The scoring criterion for this category shall be:

- Choreography (25),
- Coordination (25),
- Expression (15),
- Rhythm (15),
- Costume (10) and
- Use of stage (10).

Dance Competition

TAAAL

Bonus Round: Dance-Off

- A dance-off will be held at the end of all batches' performances as a bonus round.
- Participation in this round is not mandatory. Each batch can nominate one person to participate.
- No specific preference of songs or dance forms would be allowed.
- The music shall be played on the spot, and the participants are welcome to perform any dance form to that music.
- The discretion to play songs from the selected genre rests with the organisers.
- Batches will be chosen at random to participate in a 1 versus 1 dance-off.
- Batch with the highest score in this round will get an extra 5 points for the dance competition.

Dance Competition

**ALL IN.
ALL DAY.
ALL WEEK.**

Designed by: Akanksha Bharti (B.A. LL.B. 1st Year)

For Any Clarifications, Please Contact:

Komal Barwal (Co-Convenor)

9024527501

Udayaditya Banerjee (Co-Convenor)

8840861161